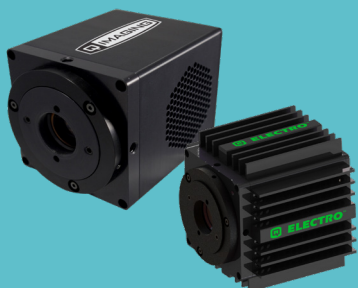


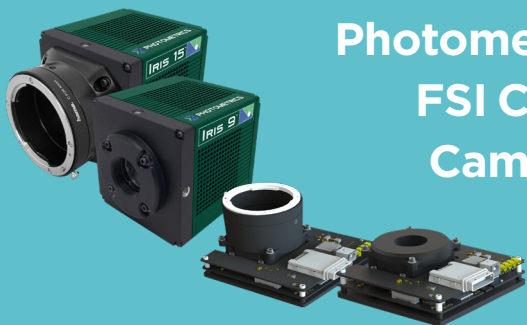
QImaging CCD Cameras: QI OEM Series



Featuring dual readout speeds, deep cooling and fast frame rates, the QI OEM-Series CCD cameras score very high on the price-performance spectrum. All models available in color or monochrome.

Camera	Sensor	Array Size (MP)	Dimensions	Pixel Size (µm)	Interface	Frame Rate	Peak QE
QI825	ICX825	1.4	1360x1024	6.45	USB	21	75%
QI674	ICX674	2.8	1920x1460	4.54	USB	15	75%
QI695	ICX695	6	2688x2200	4.54	USB	7	75%
QI815	ICX815	9	3360x2704	3.69	USB	2.5	75%
QI ELECTRO	ICX825	1.4	1360x1024	6.45	USB	21	75%

Photometrics FSI CMOS Cameras: Iris



The ideal combination of fast frame rate, large field of view and small pixels make the Iris a modern OEM workhorse across a variety of applications. Designed for easy OEM integration, the Iris is available in color or mono and PCIe or USB for both 9MP and 15MP cameras.

Board level available on both models.

Camera	Sensor	Array Size (MP)	Dimensions	Pixel Size (µm)	Interface	Frame Rate	Peak QE
Iris 9	GSense 5130	9	2980x2980	4.25	USB/ PCIe	13.5/32	73%
Iris 15	GSense 5130	15	2980x5050	4.25	USB/ PCIe	8/32	73%

Photometrics BSI CMOS Cameras: Prime

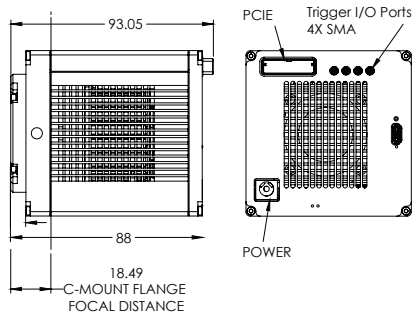


The first scientific BSI CMOS camera delivers extreme sensitivity with 95% QE. The right camera for the most demanding low-light applications.

Camera	Sensor	Array Size (MP)	Dimensions	Pixel Size (µm)	Interface	Frame Rate	Peak QE
Prime 95B	GSense 400BSI	1.4	1200x1200	11	USB/ PCIe	41	95%
Prime 95B 25mm	GSense 400BSI	2.5	1608x1608	11	USB/ PCIe	30	95%
Prime BSI	GSense 2020SQ	4.2	2048x2048	6.5	USB/ PCIe	43	95%

CUSTOMIZATION

Let us help you create just the right camera for your next product— including custom colors, logo or mechanicals. Solidworks STEP files available to help with mechanical integration.



INTEGRATOR RESOURCES

Our OEM customers are extremely important to us and we have invested heavily in resources to help you succeed with our cameras.

- PVCAM is a universal driver for all Photometrics and QImaging products— integrate once and use any camera.
- Advanced SDK tools including code examples provided to minimize integration time.



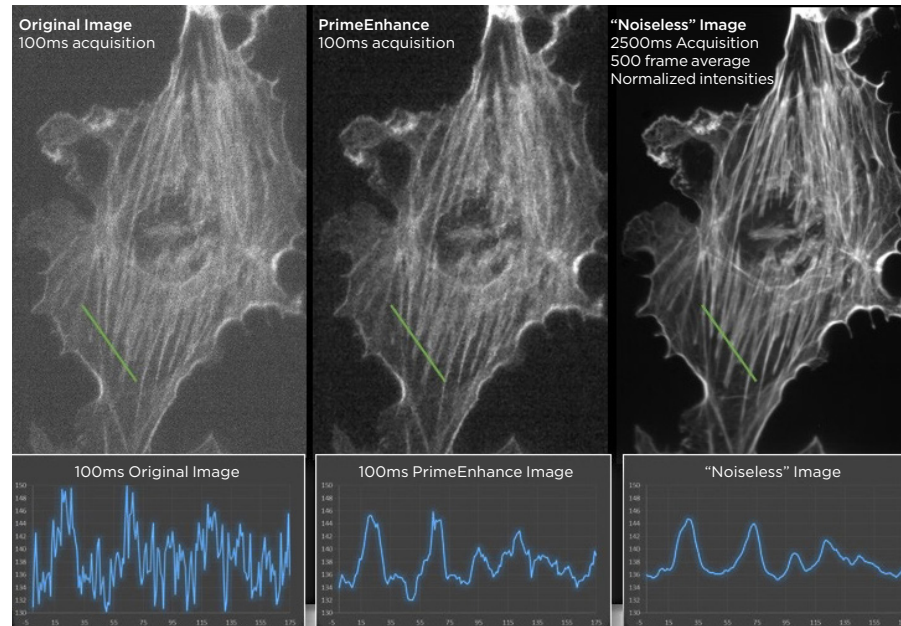
- Cameras optimized for application needs
- Flexible and customizable branding options
- Unique part number/Bill of Materials (BOM)
- Single driver platform supports a wide range of product offerings
- Strategically located global service centers
- Dedicated support from a focused OEM team

COMPUTATIONAL IMAGING

Photometrics has pioneered the use of advanced image processing to deliver answers, not just images. We have developed many routines and will also assist in embedding proprietary algorithms within the camera to set your products off against the competition.

Processing examples:

- Image correction (defective pixel correction, dynamic dark frame subtraction)
- Image enhancement: extended dynamic range (EDR) imaging, active noise reduction (denoising)
- Functional processing: SpotFinder, PrimeLocate, autofocus scoring



Advanced FPGA Processing: Denoising



info@photometrics.com
 www.OEMImaging.com
 Telephone: +1 520.889.9933
 Toll Free: +1 800.874.9789